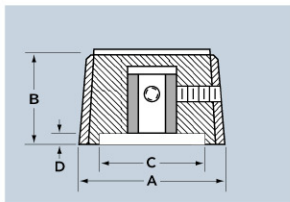




ROUND



PART NUMBER

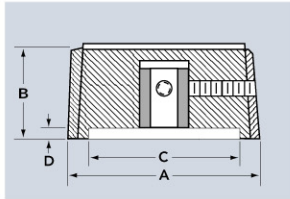
	A Diam.	B Height	C Diam.	D Depth
ST-1 N	.45	.55	—	—
ST-2 N	.50	.68	—	—
ST-3 N	.61	.55	.43	.09
ST-5 N	.75	.37	.50	.05
ST-6 N	1.15	.54	.88	.10
ST-7 N	1.50	.60	1.24	.10
ST-8 N	1.90	.82	—	—

TO COMPLETE PART NUMBER

Style	Shaft Hole	Color
N	1	BB
	2	GB
	3	YB
	4	RB
	5	



ROUND W/POINTER



PART NUMBER

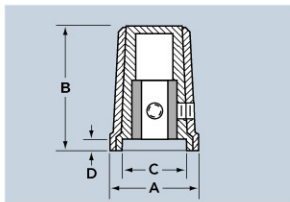
	A Diam.	B Height	C Diam.	D Depth
ST-1 P	.45	.55	—	—
ST-2 P	.50	.68	—	—
ST-3 P	.61	.55	.43	.09
ST-5 P	.75	.37	.50	.05
ST-6 P	1.15	.54	.88	.10
ST-7 P	1.50	.60	1.24	.10
ST-8 P	1.90	.82	—	—

TO COMPLETE PART NUMBER

Style	Shaft Hole	Color
P	1	BB
	2	GB
	3	YB
	4	RB
	5	



SKIRTED ROUND



PART NUMBER

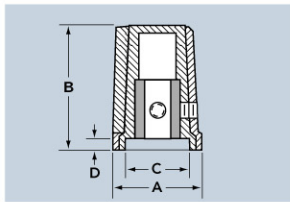
	A Diam.	B Height	C Diam.	D Depth
ST-1 D	.57	.71	.41	.09
ST-2 D	.62	.84	.48	.09
ST-3 D	.73	.71	.58	.09
ST-5 D	.84	.45	.60	.05
ST-6 D	1.25	.63	.98	.10
ST-7 D	1.67	.73	1.41	.10
ST-8 D	2.02	1.00	1.78	.13

TO COMPLETE PART NUMBER

Style	Shaft Hole	Color
D	1	BB
	2	GB
	3	YB
	4	RB
	5	



SKIRTED W/POINTER



PART NUMBER

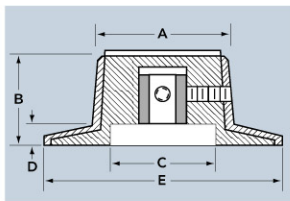
	A Diam.	B Height	C Diam.	D Depth
ST-1 K	.57	.71	.41	.09
ST-2 K	.62	.84	.48	.09
ST-3 K	.73	.71	.58	.09
ST-5 K	.84	.45	.60	.05
ST-6 K	1.25	.63	.98	.10
ST-7 K	1.67	.73	1.41	.10
ST-8 K	2.02	1.00	1.78	.13

TO COMPLETE PART NUMBER

Style	Shaft Hole	Color
K	1	BB
	2	GB
	3	YB
	4	RB
	5	



ROUND W/DIAL



PART NUMBER

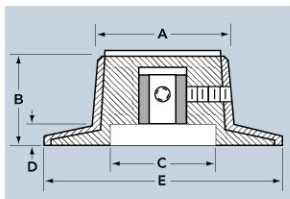
	A Diam.	B Height	C Diam.	D Depth	E Diam.
ST-1 G	.65	.80	.55	.08	1.08
ST-2 G	.91	.86	.65	.22	1.42
ST-3 G	1.14	.72	.70	.18	1.74

TO COMPLETE PART NUMBER

Style	Shaft Hole	Color
G	1	BB
	2	GB
	3	YB
	4	RB
	5	



ROUND W/DIAL W/INDICATOR



PART NUMBER

	A Diam.	B Height	C Diam.	D Depth	E Diam.
ST-1 F	.65	.80	.55	.08	1.08
ST-2 F	.91	.86	.65	.22	1.42
ST-3 F	1.14	.72	.70	.18	1.74

TO COMPLETE PART NUMBER

Style	Shaft Hole	Color
F	1	BB
	2	GB
	3	YB
	4	RB
	5	