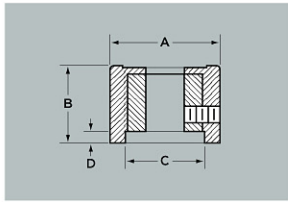


MILITARY SERIES



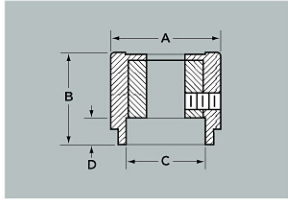
CONCENTRIC ROUND



Part Number	NUT CLEARANCE				TO COMPLETE PART NUMBER			
	A Diam.	B Height	C Diam.	D Depth	Style	Shaft Hole	Color	Suffix
MS91528 1N__C	.700	.510	.485	.026	N	2	B	C
2N__C	.900	.655	.640	.114		4	S	G
3N__C	1.250	.530	.750	.114			G	J



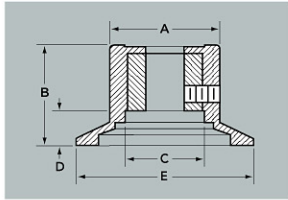
CONCENTRIC SKIRTED ROUND



Part Number	NUT CLEARANCE				TO COMPLETE PART NUMBER			
	A Diam.	B Height	C Diam.	D Depth	Style	Shaft Hole	Color	Suffix
MS91528 1D__C	.700	.690	.485	.188	D	2	B	C
2D__C	.900	.885	.640	.320		4	S	G
3D__C	1.250	.700	.750	.250			G	J



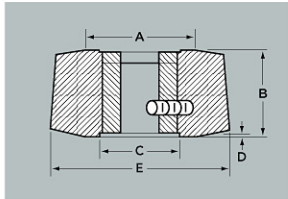
CONCENTRIC DIAL



Part Number	With Arrow	MS91528 Plain Dial	NUT CLEARANCE				TO COMPLETE PART NUMBER				
			A Diam.	B Height	C Diam.	D Depth	E Width	Style	Shaft Hole	Color	Suffix
1G__C	1F__C		.700	.690	.485	.188	1.150	G	2	B	C
2G__C	2F__C		.900	.885	.640	.320	1.500	F	4	S	G
3G__C	3F__C		1.250	.700	.750	.250	1.837			G	J



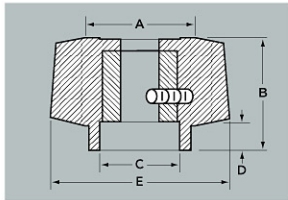
CONCENTRIC DOUBLE BAR



Part Number	NUT CLEARANCE					TO COMPLETE PART NUMBER			
	A Diam.	B Height	C Diam.	D Depth	E Width	Style	Shaft Hole	Color	Suffix
MS91528 1GG__C	.700	.510	.485	.026	1.150	GG	2	B	C
						JJ	4	S	G
						SS		G	J



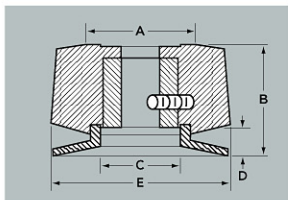
CONCENTRIC SKIRTED DOUBLE BAR



Part Number	NUT CLEARANCE					TO COMPLETE PART NUMBER			
	A Diam.	B Height	C Diam.	D Depth	E Width	Style	Shaft Hole	Color	Suffix
MS91528 1HH__C	.700	.690	.485	.188	1.150	HH	2	B	C
							4	S	G
								G	J



CONCENTRIC DOUBLE BAR W/DIAL



Part Number	NUT CLEARANCE					TO COMPLETE PART NUMBER			
	A Diam.	B Height	C Diam.	D Depth	E Width	Style	Shaft Hole	Color	Suffix
MS91528 1II__C	.700	.690	.485	.188	1.150	II	2	B	C
							4	S	G
								G	J

